

Response evaluation and follow-up strategy

Expert consensus

Femke P. Peters, MD PhD

Radiation-oncologist

Leiden University Medical Center, The Netherlands



No disclosures

Expert meeting @ WRC 2017

- UK
- Denmark
- Poland
- Italy
- Germany
- Belgium
- Canada
- India
- The Netherlands



Aim

- To determine minimal requirements for response evaluation and follow-up in organ preservation trials
- *NOT* for organ preservation approach in daily practice outside of trials
- Still experimental stage

Definitions

- Response evaluation vs Follow-up

Response evaluation

- Timing
- Modalities
- Definitions of response

Response evaluation

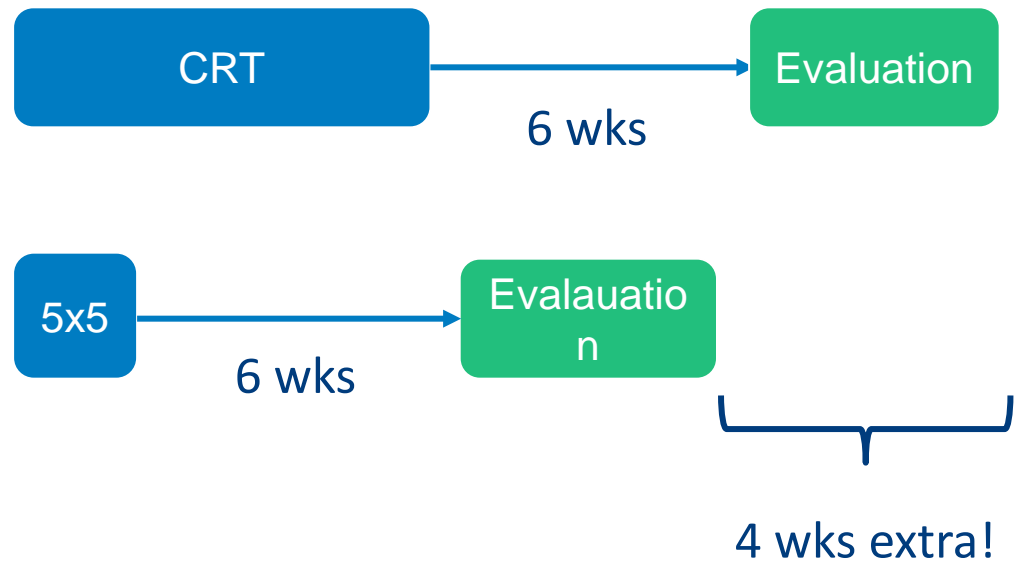
- Timing
 - Starting point:
START vs END of therapy

Response evaluation

- Timing

- Starting point:

START vs END of therapy



Response evaluation

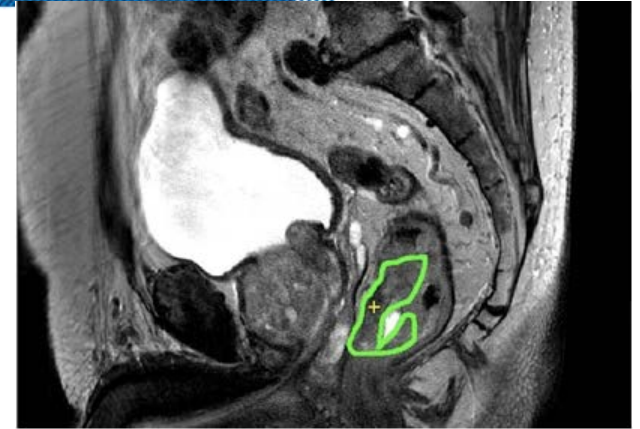
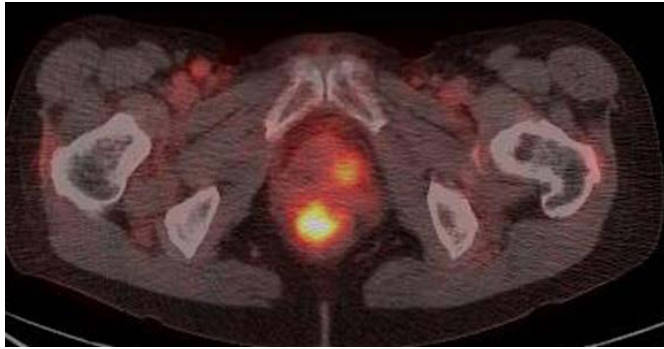
- Timing
 - Starting point:
START vs END of therapy
 - Best time to find (near)cCR

Response evaluation

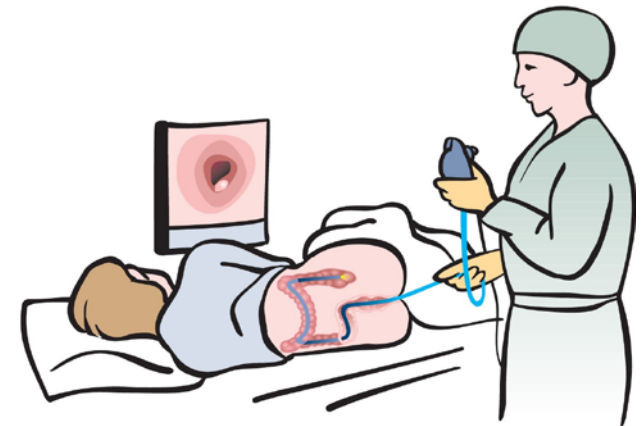
- Timing
 - Startingpoint:
START vs END of therapy
 - Best time to find (near)cCR
 - Best time to find *POOR* responders

Response evaluation

- Timing
 - Startingpoint:
START vs END of therapy
 - Best time to find (near)cCR
 - Best time to find *POOR* responders
 - 6-8 weeks after *END* of chemoradiotherapy
 - After SCRT to be determined



MODALITIES



Response evaluation

- Timing
- Modalities

Response evaluation

- Timing
- Modalities
 - DRE
 - MRI

Response evaluation

- Timing
- Modalities
 - DRE
 - MRI
 - Flexible, white light endoscopy
 - *NO* biopsies

Response evaluation

- Timing
- Modalities
 - DRE
 - MRI
 - Flexible, white light endoscopy
 - *NO* biopsies
 - Baseline reference images

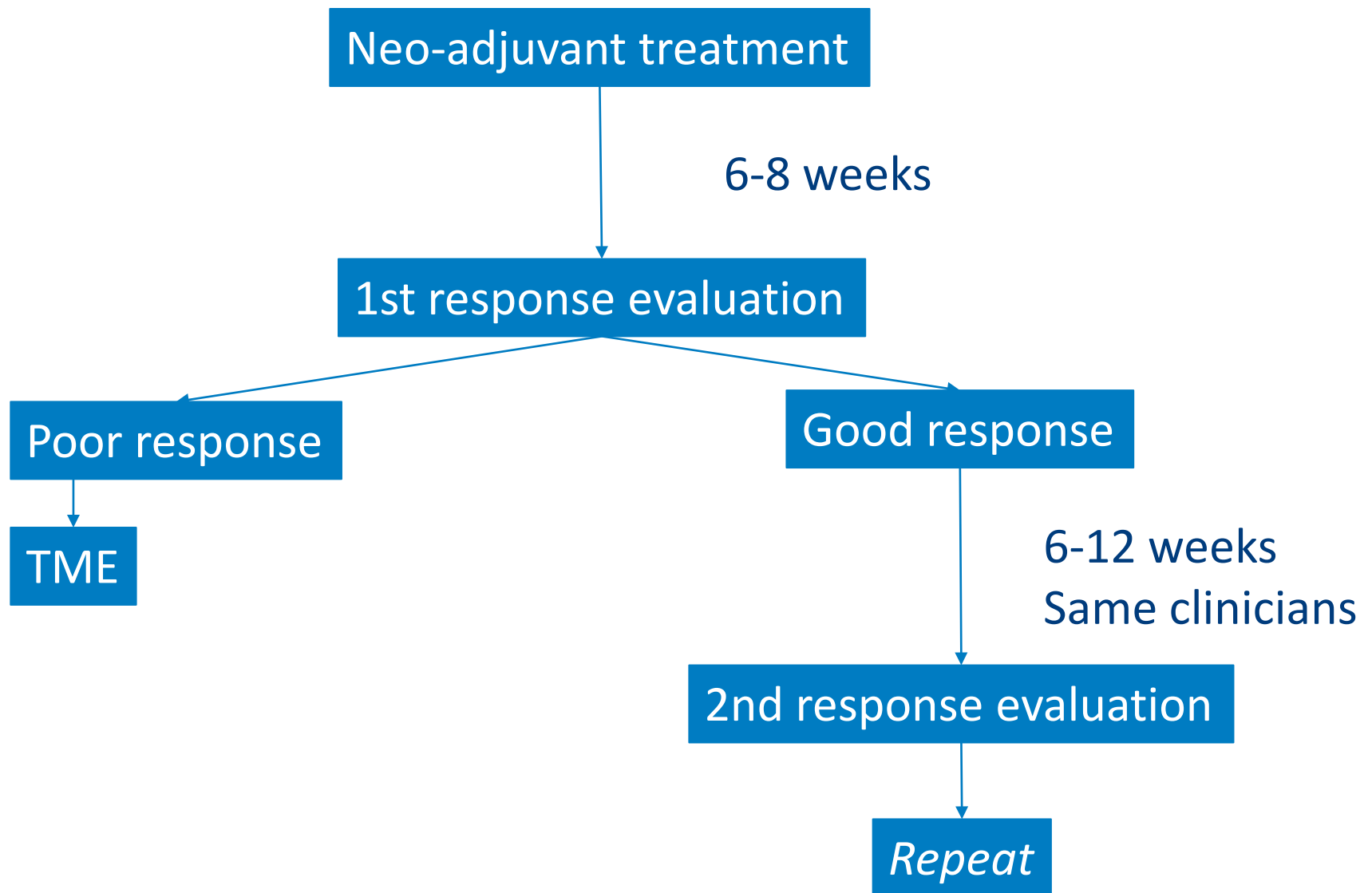
Response evaluation

- Timing
- Modalities
 - DRE
 - MRI
 - Flexible, white light endoscopy
 - *NO* biopsies
 - Baseline reference images
 - No PET-CT in minimum requirements

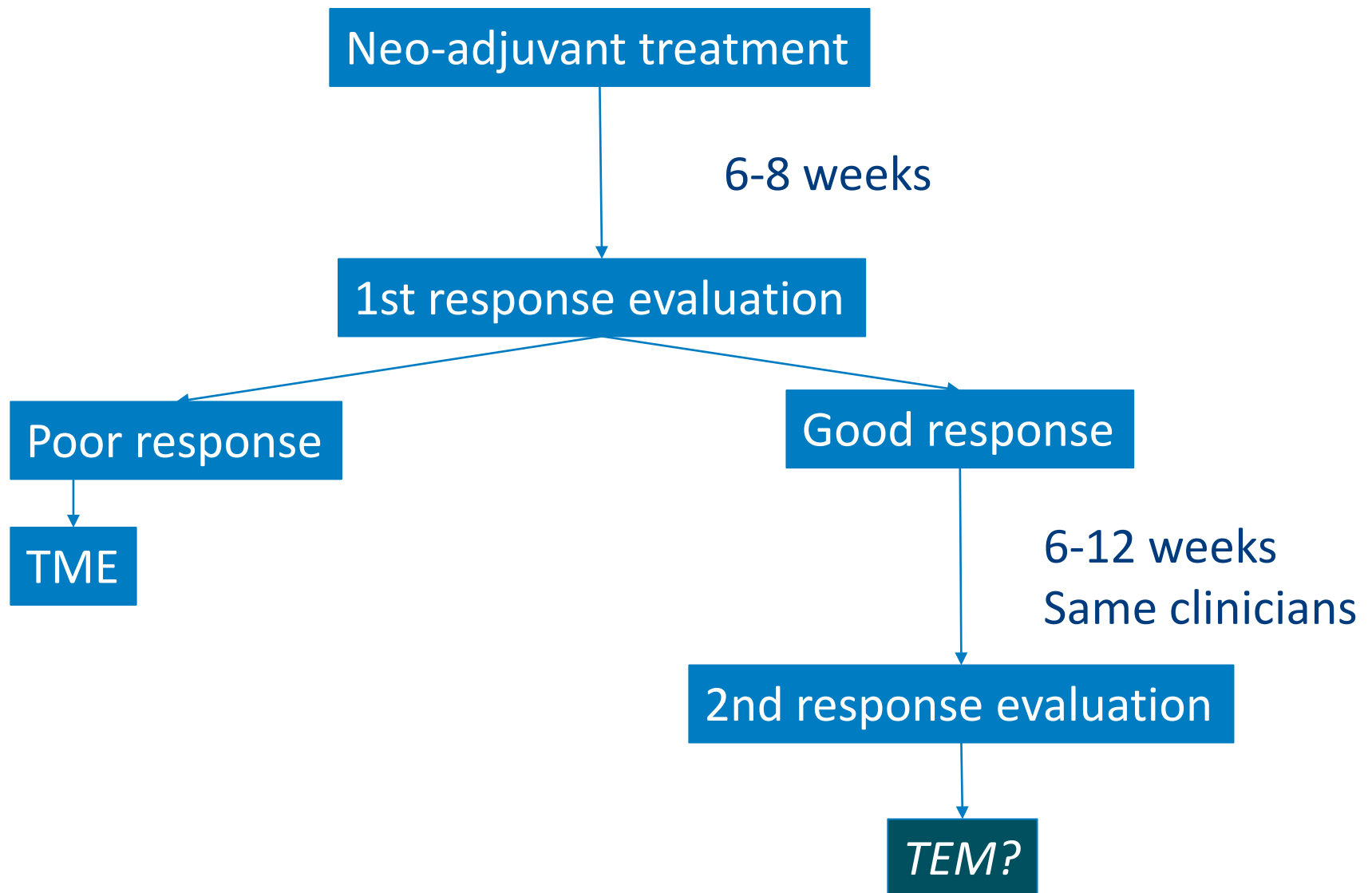
Response evaluation

- Timing
- Modalities
 - DRE
 - MRI
 - Flexible, white light endoscopy
 - *NO* biopsies
 - Baseline reference images
 - No PET-CT in minimum requirements
 - *DYNAMICS*

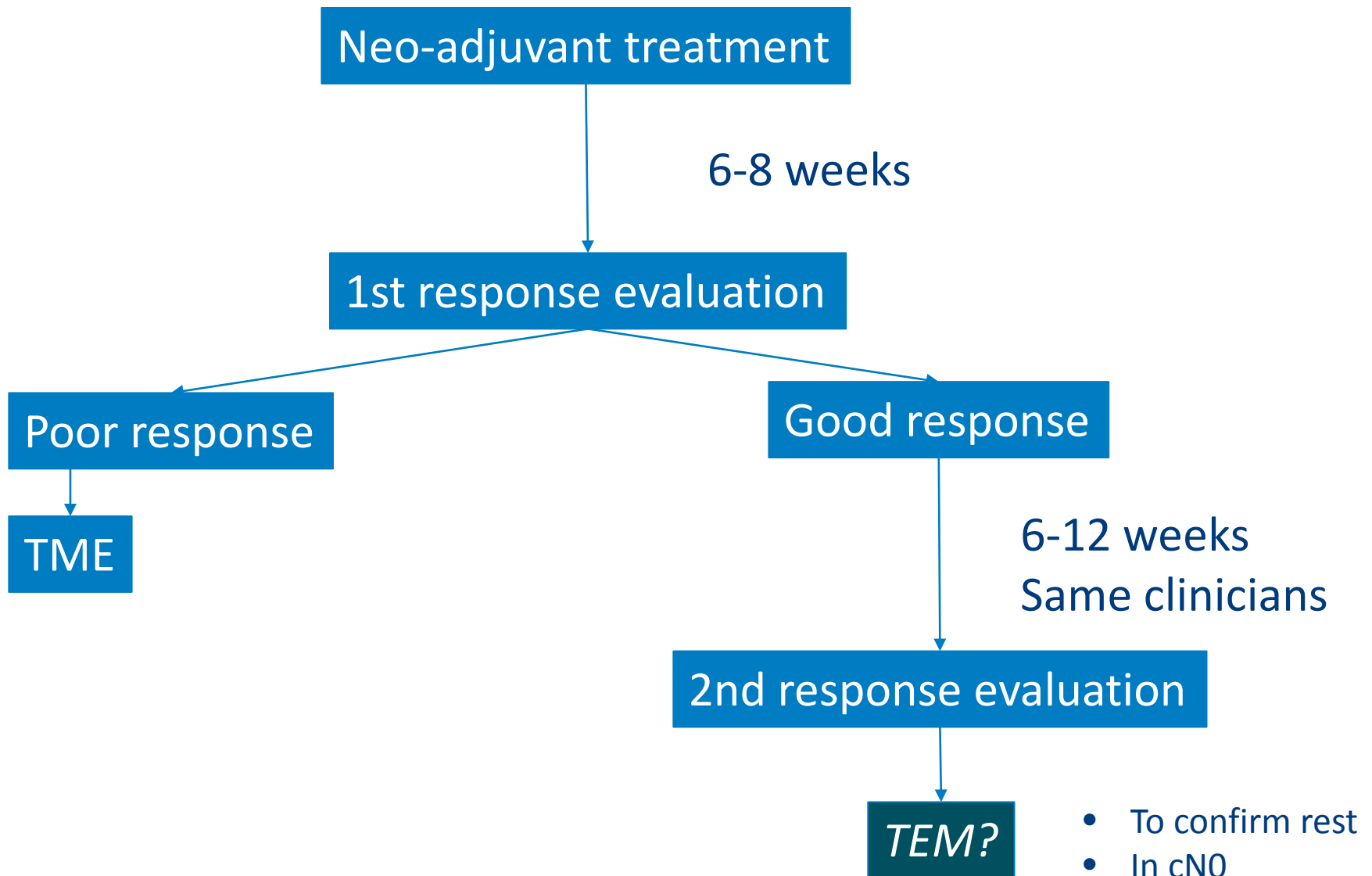
Response evaluation



Response evaluation



Response evaluation



RESPONSE?

Response evaluation

- Timing
- Modalities
- Definitions of response

Response evaluation

- Timing
- Modalities
- Definitions of response
 - Poor response

Response evaluation

- Timing
- Modalities
- Definitions of response
 - Poor response: 50%?



Follow-up

- Follow-up AFTER decision for organ preservation

Follow-up

- Follow-up AFTER decision for organ preservation
 - Loco-regional follow-up vs distant metastasis

- Follow-up AFTER decision for organ preservation
 - Loco-regional follow-up:
 - Frequently year 1-2:
 - Endoscopy
 - MRI
 - Risk stratified
 - Distant metastasis
 - Local guidelines

Essential

- Registry
- QOL/PROMS



From this point

- Survey
- Consensus paper
- More research





Leids Universitair
Medisch Centrum

Thank you for your attention!

F.P. Peters, MD PhD

Leiden University Medical Center

f.p.peters@lumc.nl

